



TGO-DC2 "ADAS" Cart Assembly Guide

GOLIATH CARTS, LLC
COPYRIGHT 2021



TGO-DC2 “ADAS” MOBILE WORKSTATION CART ASSEMBLY INSTRUCTIONS



GOLIATH TGO-DC2 “ADAS” CART SAFETY INSTRUCTIONS

Please read completely before using the Cart.

Follow the information warnings written on the sticker affixed to the door of the charging area and battery area. Do not remove warning label from the cart.

Always use the recommended battery types and equipment to prevent damage or failure.

Do not allow children under the age of 18 years of age to use the cart.

Periodically check and ensure the battery, charger, inverter and other components are in their proper positions, free from damage and that all connections are tight.

Do not use the cart for any other purposes than what is described in our manuals and web site.

Always use caution when working on battery and electrical systems and make sure to turn off all power when working on these systems.

Do not use substitute parts. Contact the manufacturer or Goliath Carts for replacement parts.

This product is manufactured by Goliath Carts, LLC.

P.O. Box 891210

Temecula, CA 92589

Toll Free: 866.694.2278

TGO-DC2 “ADAS” CART ASSEMBLY INSTRUCTIONS

Part #	Qty	Description	Part #	Qty	Description
A	16	3/8-16 x 1" Hex Bolt	MM	2	Monitor Uprights
B	16	Flat Washer for 3/8-16" Bolt	NN	1	Extension Cord Bar
C	16	Locking Washer for 3/8-16" Bolt	QQ	1	Cart Push Handle
D	22	1/4-20 x 3/4" Button Head Screw	RR	2	6" Stationary Casters
E	18	Lock Washer for 1/4-20" Screw	SS	2	6" Locking/Swivel Casters
F	22	Flat Washer for 1/4-20" Screw	TT	2	VESA Monitor Mount
G	16	10-32 x 1/2" Button Head Screw	UU	16	Screws for VESA
H	8	10-32 x 1/2" Flat Washer	VV	4	10-32 x 1/2" Nyloc Nut
I	2	1/4-20 x 3/4" Hex Nut	WW	1	VESA Adaptor Plate
J	1	Cabling Access Tube	XX	1	VESA Mounting Bracket

PLEASE NOTE: THIS CART IS DESIGNED TO BE ASSEMBLED USING THE HEX KEYS PROVIDED. DO NOT USE POWER TOOLS TO ASSEMBLE THE CART AS IT MAY DAMAGE THE PRODUCT.

Tools Needed:

- 3/8 and 1/4-inch Socket for installing casters and holding bolts during install
- 5/32" and 7/32" Hex Keys (included)

STEP 1: Install Casters on Bottom of Cart

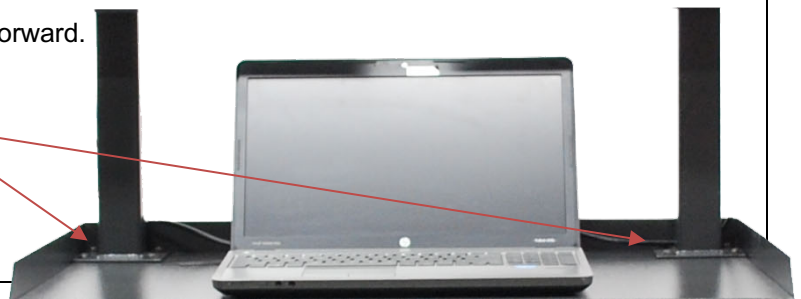


Note: Nuts are welded into the cart.

1. Lay the bottom box of the cart on its back in order to see the bottom
2. Install 2 Stationary Casters (Part RR) on the back of the cart using the 3/8-16" Hex Bolts (Part A). Include a Flat washer and Lock Washer (Parts B, C).
3. Install 2 Swivel Casters (Part SS) on the front of the cart using the 3/8-16" Hex Bolts (Part A). Include a Flat washer and Lock Washer (Parts B, C).

STEP 2: Install Monitor Uprights

1. Place monitor uprights (Part MM) with brackets facing forward.
2. Use 1/4"-20 x 3/4" screws and washers to secure (Part D,E,F) using included hex key.
3. Install Covers on Uprights Using (8) Screws (Part G).



Remove Screw. Then mount monitor to bracket.



Orange: VESA Mount
Blue: Adaptor Plate
Green: Mounting Bracket

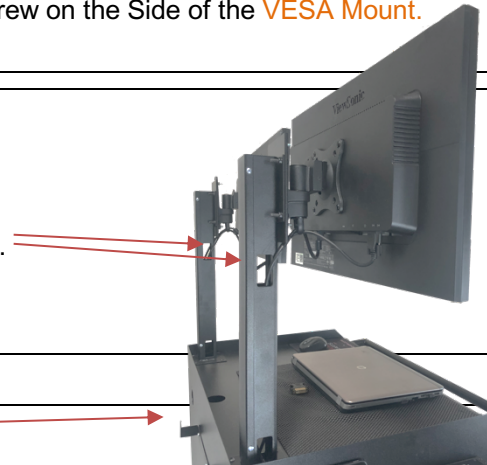


STEP 3: Install 2 Monitors Using Included VESA Mount

1. Use (4) ¼-20" Screws (Part D) to attach the **VESA Monitor Mount Adaptor Plate** (Part WW) to the **Mounting Bracket** (Part XX) on the Monitor Uprights (Part MM).
2. Attach the **VESA Mount** (Part TT) to the **Adaptor Plate** Using (2) Nyloc Nuts (Part VV) (On the Top and Bottom).
3. There is a Bag with 16 Silver Screws (Part UU). You will need 4 of the Screws (Part UU) to Mount Each Monitor to their **VESA Brackets**. Select the Appropriate Screws and Mount the Monitors to the Brackets. (Make sure to Align the Mount to Bracket).
4. Install the Monitor onto the **VESA Mount** Base. Tighten the Flat Head Set Screw on the Side of the **VESA Mount**.
5. Repeat Steps for Second Monitor.

STEP 4: Place Wires Through Security Holes

1. Connect Wires to Monitors.
2. Place Wires Through Rectangular Holes on the Side of VESA Monitor Mounts.
3. Plug in Wires to Connecting Power Source and/or Laptop.



STEP 5: Install Cart Push Handle & Extension Cord Bracket

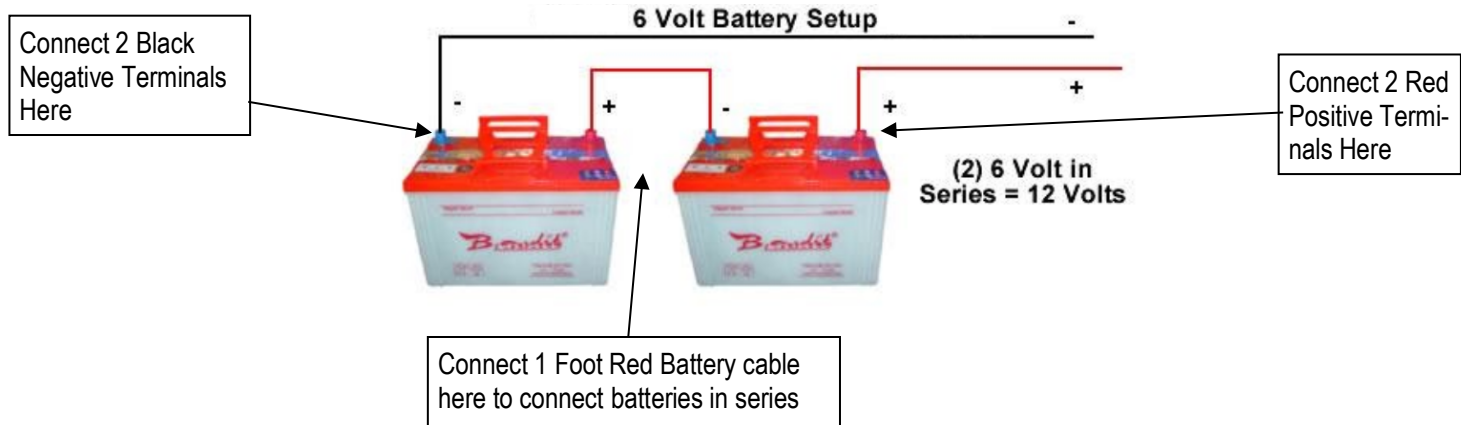
1. On Front of Cart, Install Cart Handle (Part QQ) using (4) 1/4 in screws (Part D) and flat washers (Part F).
2. On Back of Cart, Install Extension Cord Bracket using **Two** of the 10/32-1/2" Screws and Flat Washers (Part G, H). Set the Rest of the Screws and Washers Aside.

STEP 6: Install Batteries



1. Open compartment on the front of the cart.
2. Install Battery Brackets using ¼" Screws, Washers, and Hex Nuts (Parts D, E, F, I).
3. Place Battery(s) in the compartment. Use the angle irons to secure the batteries.
4. Place the straps over the battery and secure.
5. Connect 2 red wires to the positive battery Terminal (on battery 1) and 2 black to the negative battery terminal (on battery 2). Connect the 1-foot cable between the 2 batteries to put them in series.

IMPORTANT NOTE: If using (2) 6 Volt batteries make sure to connect them in series (see Diagram Below)



NOTE: Make sure that battery nuts are tightened to ensure a good connection.

STEP 7: Install Computer Equipment and Printer

1. Insert your Computer Equipment and printer power supplies through neck. You can remove the Cable Access Tube (Part J) for easy access.

STEP 8: Install Side Holder for Scan Tool and Hooks on Side

1. Use 10-32 x 1/2:" Screws and Flat Washers (Parts G, H) to Install Side Holders.
2. Position Hooks Near Adjustable Cubbies Where Needed to Hold Power Cables
3. Take Backing off of Double-Sided Tape on Back of Hooks
4. Place Hooks in Position to Hold Wires for Scan Tools



STEP 9: Power up System (IMPORTANT!)

1. Make sure Kill Switch is Inserted and in the ON Position
2. Turn on the Inverter
3. Turn on Power Strip and Plug in All of your Devices: i.e. Laptop, Printer, Cell Phone, Camera, etc.



YOUR GOLIATH CARTS - TGO-DC2 "ADAS" CART ASSEMBLY IS NOW COMPLETE.

PLEASE REVIEW ALL SAFETY INSTRUCTIONS!

We have FAQ's and Technical Documents on our website

Visit us online at www.goliathcarts.com